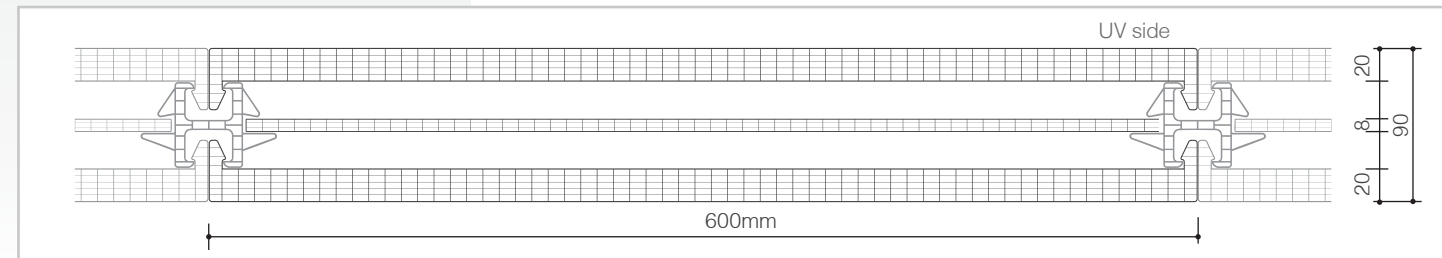


INTERLOCKING SYSTEMS

arcoPlus®
626 DOUBLE Connector system



SECTION



Double or triple-layer system of UV protected multiwall polycarbonate for curtain walls

PRODUCTION STANDARDS

Thickness	90mm
Structure	6 + 4 + 6 walls
Modular width	600mm
Panel length	no limits

DESCRIPTION

The Double Connector arcoPlus® system consists of two, six-wall arcoPlus®626 panels united by a particular polycarbonate joint called Double Connector. Due to the multi-layer composition, it is an ideal product for the realization of translucent continuous facades characterized by high energy and structure

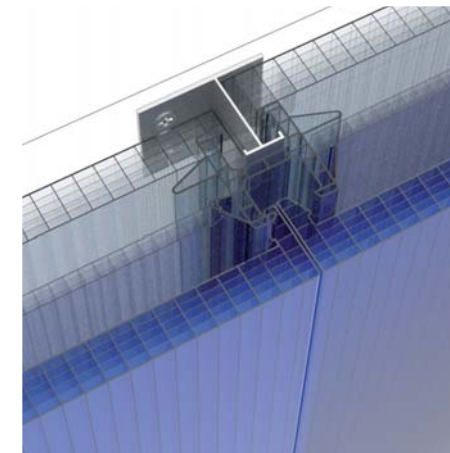
TECHNICAL FEATURES

Thermal insulation	0,7 ÷ 0,5 W/m²K
Acoustic insulation	25 ÷ 27 dB
Linear thermal expansion	0,065mm/m°C
Temperature range	-40°C +120 °C
UV rays protection	2 sides coextrusion
Fire reaction EN 13501	EuroClass B-s1,d0

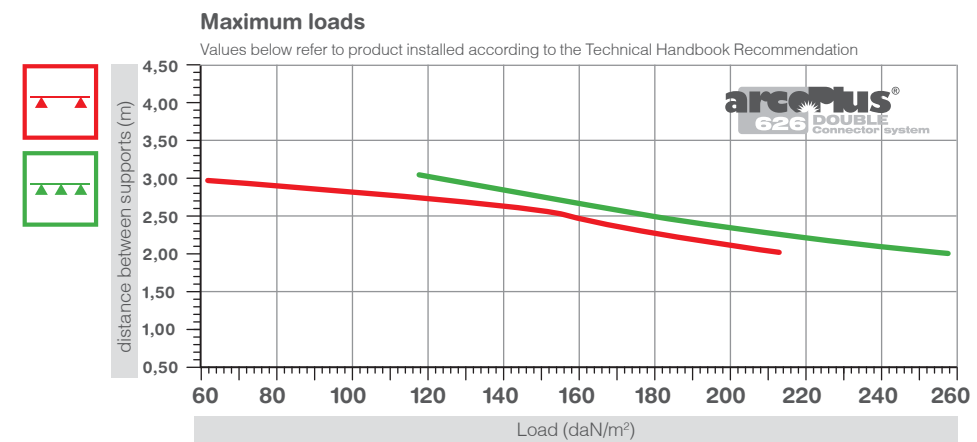
performance. The use of both aluminum profiles with thermal break and the polycarbonate Double Connector allows the application of an anchoring system without penetration of arcoPlus® panel. Energy performance is thereby enhanced due to the exclusion of thermal bridges.

THERMAL INSULATION

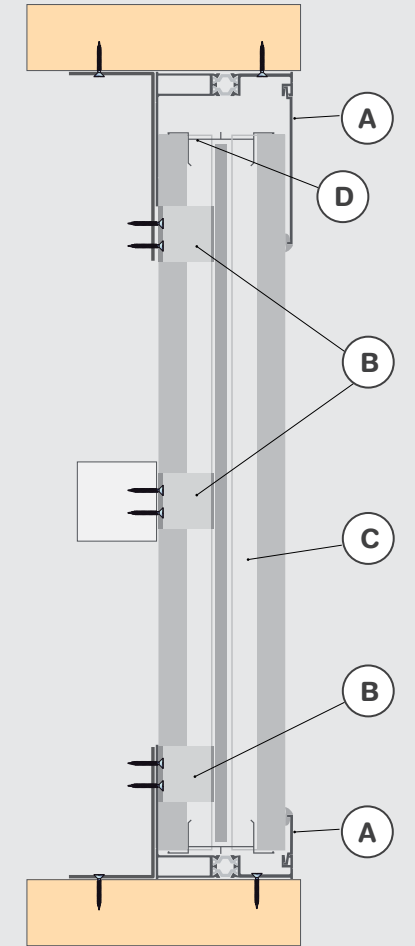
The polycarbonate system in the triple-layer version assembled with a unique Double Connector greatly reduces the heat loss of the translucent facades. While a high-performance glass infill is able to arrive to a thermal transmittance of 1.2 Wm²K, dual-chamber polycarbonate system reaches a value of 0.62 W/m²K.



LOAD RESISTANCE



WALL SECTION



ACCESSORIES

The arcoPlus®626 Double Connector system allows the realization of high-performance vertical curtain walls and translucent roofing.

- a) Aluminum perimeter profile with thermal break, provided with sealing gaskets;
- b) Aluminum bracket for the anchorage to the supporting structure;
- c) Polycarbonate start and end profiles, and Double Connector for the connection between interior and exterior wall panels;
- d) Sealing of the cells using special tapes and aluminum block covers.

Calido
LIGHT MANAGEMENT

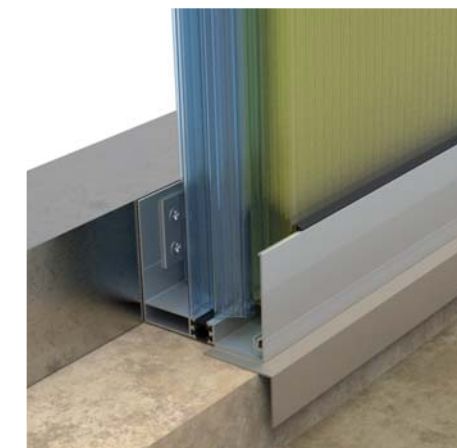
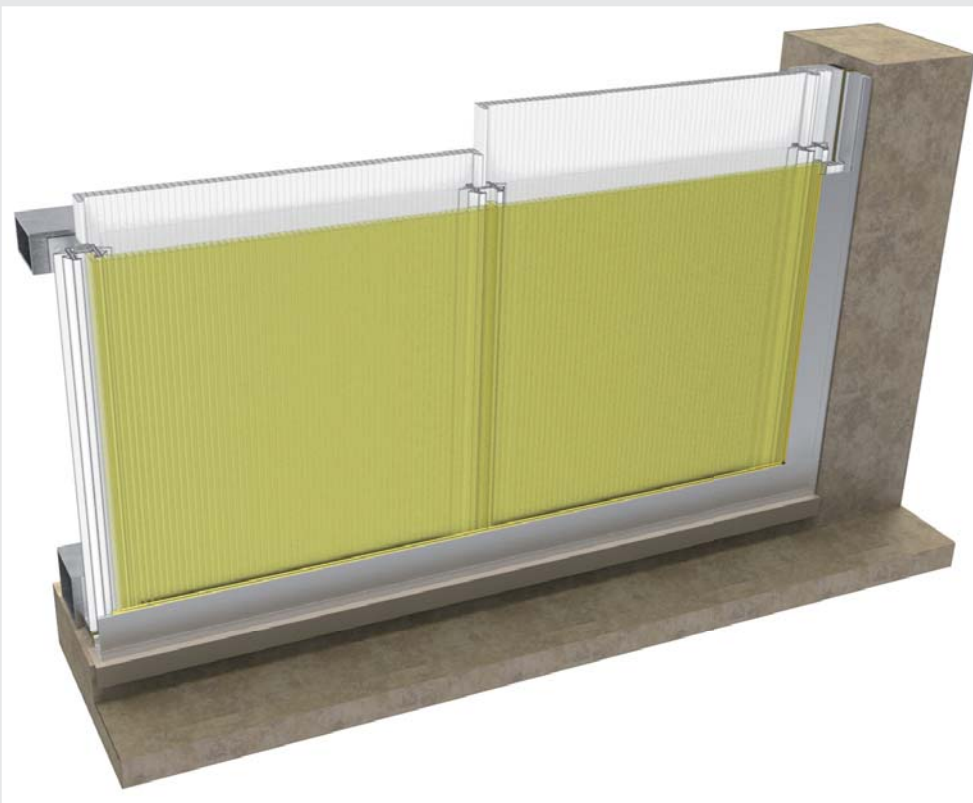
IR AR
PRODUCT AVAILABLE WITH IR AND AR TREATMENT

ADVANTAGES

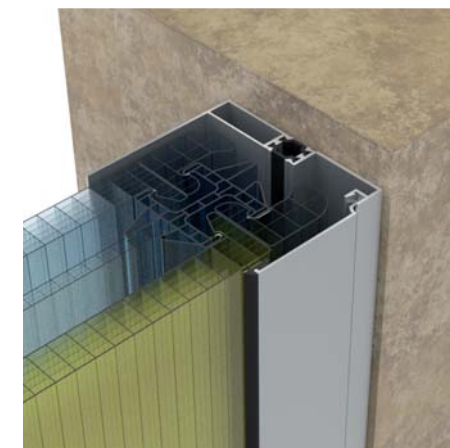
- ❖ Easy installation
- ❖ Thermal insulation
- ❖ Light transmission
- ❖ The possibility to create various colors inside/outside
- ❖ Thermal bridge interruption

APPLICATIONS

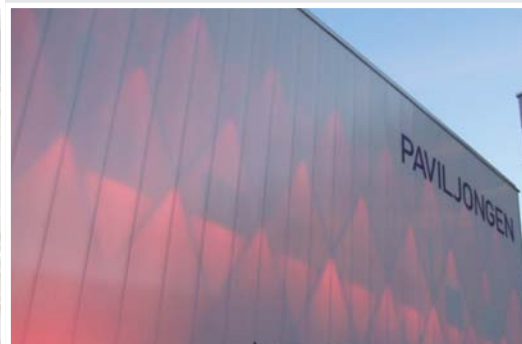
- ▶ Vertical windows
- ▶ Roofing



BASE PROFILE DETAIL
Removable base profile with thermal break



SIDE PROFILE DETAIL
Vertical glazing detail with the profile and thermal break



UV PROTECTION

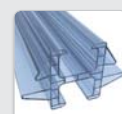
The exterior surface of the panel is co-extruded with high-performance UV-absorbing polycarbonate to ensure excellent protection against ultra-violet rays, hail, and accidental impacts even after prolonged exposure to sunlight.

ACCESSORIES

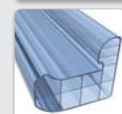
The system includes a complete range of aluminum profiles for installing the panels.

The air cells of the polycarbonate panels must be sealed using vented aluminum tape. This allows correct ventilation and prevents soiling on the inside.

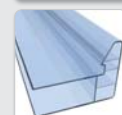
ACCESSORIES



2282
Double connector
in polycarbonate



2179
Start profile
in polycarbonate



2180
End profile
in polycarbonate



4328
AL plate



4329
Sealing PE-LD
4x15mm



4327
Additional tape



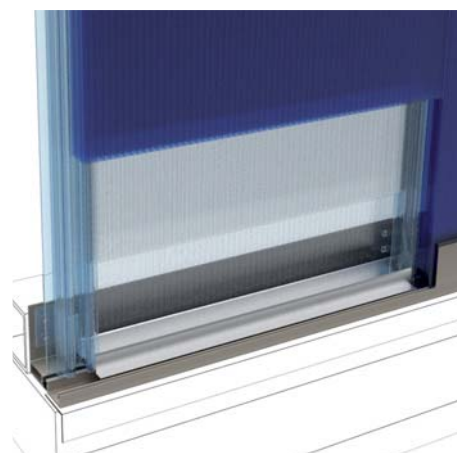
4678/600 th.20mm
Block cover AL 20
Reverso



Aluminum
separator



Aluminum
perimeter profile

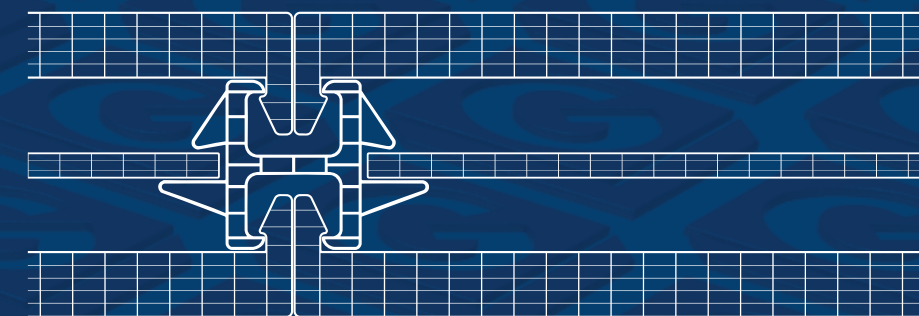


BASE PROFILE DETAIL
Vertical wall detail with the aluminum separator



SYSTEM ELEMENTS DETAIL
Detail of the interlocking system with the Double Connector and the aluminum plate

arcoPlus
626 DOUBLE
Connector system



dott.gallina s.r.l.

strada Carignano 104 - 10040 La Loggia (Torino) Italia
tel. +39 011 962 81 77 - fax +39 011 962 83 61
mail: info@gallina.it - web: www.gallina.it

ED.ENGL 10_13

All the information contained in this document is reliable, non-binding for the producer and can be subject to change without notice.

dott.gallina
Polycarbonate